



server
MANIA
HOSTING EMPOWERED



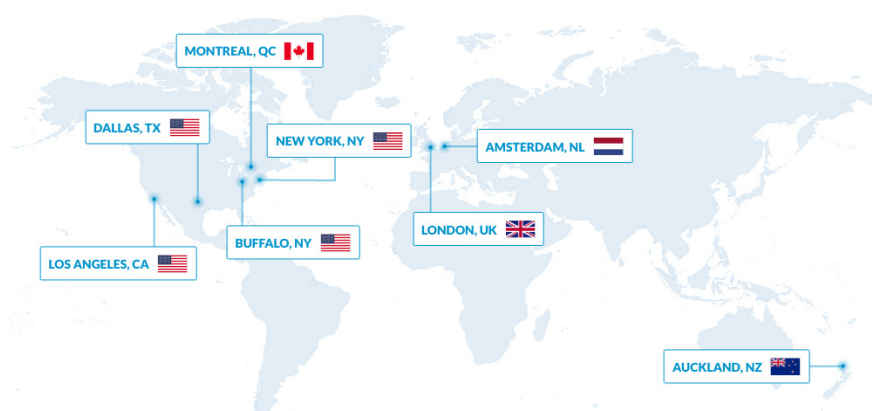
ABOUT US

HOSTING EMPOWERED

ServerMania is a Canadian company with over a decade of experience building high-performance infrastructure hosting platforms for businesses globally. We offer a wide range of fully customizable dedicated, hybrid, cloud, colocation and IP Transit services. Our mission is to empower clients by equipping them with fast, reliable, innovative infrastructure hosting while upholding a 100% network uptime SLA. This is assisted by a 24x7x365 rapid response team — one with some of the best response times in the industry.

SECURED DEDICATION ACROSS THE GLOBE

Our data centers are powered by high availability infrastructure, and our multi-lingual technical support teams remain on-site and available 24x7x365. This coupled with our enterprise-grade security enables us to provide a 100% network uptime guarantee to all clients anywhere in the world.



FUNDAMENTALS

- Founded in 2002
- Based in Toronto, Ontario & Buffalo, New York
- Eight (8) data centers throughout North America, Europe, and Oceania
- 24x7x365 Superior Support Fleet with a 15 Minute Response Time
- Live Sales Chat
- Rush Delivery Options
- Save up to 15% instantly by selecting a prepayment term
- 100% Uptime SLA
- Enterprise-Grade Hardware
- FREE IPMI/Console Access with ALL Servers!
- Personal Service Approach via our Account Managers

DATA CENTER SPECIFICATIONS

- Level 1 Payment Card Industry (PCI) Service Provider
- SSAE16 Type II, SAS70 Type II, SOC 2 TYPE II, ISO/IEC 27001
- Safe Harbor Certified
- CDSA Content Protection and Security Standard Certified
- Tier 1 & Tier 3 Data Center Design
- Multi-homed, fully redundant network
- Strategically located in: Dallas, TX, Los Angeles, CA, Buffalo, NY, New York City Metro, NY, Montreal, QC, Amsterdam, NL, Auckland, NZ and London, UK
- High Density Power & Cooling Ability
- Green Powered Facilities
- Scalability to ensure long-term growth
- 300Gbps+ Network Capacity

COMPANY TIMELINE

2002 - The Birth of a Hosting Company

Founded in 2002 as B2 Net Solutions, the company was created to offer a wide range of web hosting services.

2006 - Virtual Private Servers

Introduced VPS hosting solutions, bridging the gap between dedicated and web hosting.

2009 - New Office Location

As a result of ongoing company growth, we expanded our office facilities to a new location in the Toronto core.

2011 - The Buffalo, NY Facility

Powered by Niagara Falls, our Green Data Center gave us just the boost we needed to support our ongoing expansion.

2012 - Into The Cloud

ServerMania moved into the cloud, offering fully redundant, OnApp-powered cloud servers scalable up to 16 GB RAM.

2014 - Core Network Upgrades

Upgraded US-based network with Juniper MX Series Routers. The ethernet-optimized MX960 is one of the largest Carrier Ethernet platforms in the industry.

2003 - Dedicated Servers Hosting

In the spring of 2003, we began offering Dedicated Server Hosting on both Windows and Linux.

2007 - Custom Client Portal

Developed a first version of very own custom control panel, and made it available to our clients.

2010 - A Better Control Panel

We developed the Shepherd control panel for billing, support and device management. Included enhanced features and dynamics for a user-friendly experience.

2012 - The ServerMania Brand

We rebranded our company in 2012 to ServerMania, simultaneously launching enhanced services and support.

2013 - A Year of Unprecedented Growth

Our brand grew by over 300%. As a result of massive growth, we opened new facilities located in Los Angeles, CA; and explored offerings in Chicago, IL; and Atlanta, GA.

2015 - Full Coverage DDoS Protection

ServerMania has equipped enterprise-grade hardware to defend against what is rapidly becoming the most common and threatening type of cyber attack.

COMPANY TIMELINE

2016 - New Office Location

As a result of ongoing company growth, we expanded into a new office situated in Stoney Creek, Ontario.

2017 - Expanded Network into Montreal, QC

The facility is at the forefront of the green power revolution. Multi-Tbps capable Huawei powered network with native 10 Gbps server network access.

2019 - Expanded Network into Auckland, New Zealand

Located in the heart of New Zealand, our Auckland data center delivers customers with low-latency connectivity throughout the Asia-Pacific region, including New Zealand, Australia, and Southeast Asia.

2019 - Expanded Network into New York City Metro

With low-latency connectivity to the Foreign Exchange, North America, and beyond, our New York City Metro data center delivers the highest levels of redundancy with the network capacity to meet the needs of any project.

2020 - New Public Cloud Launch

Our new cloud platform was engineered to deliver simplicity, flexibility and affordability, to serve businesses of all sizes.

2016 - Enhanced Cloud Services

Engineered for redundancy, performance, and scalability, we introduced our high-availability, public and private cloud platform powered by OpenStack technology.

2018 - Expanded Network into Amsterdam, NL

Located in a Tier 3 data center with access to a wide range of bandwidth providers and fast fiber connections throughout Europe.

2019 - Redesigned Order and Server Management Experience

Our redesigned dedicated server pricing page, order form, and server management control panel empowers customers to quickly and easily manage every aspect of their server experience with us.

2019 - Expanded Network into London, United Kingdom

Our London data centers delivers exceptional connectivity to Europe, Africa, and the Middle East while maintaining optimal redundancy as a Tier 4 data center.

OUR NETWORK

Offering One Speed: High-Gear. Our data centers provide the network infrastructure availability, 24x7x365 support and Enterprise-grade security which enables us to provide a 100% Network Uptime Guarantee, excluding scheduled or emergency maintenance.



AUCKLAND, NZ

Our Auckland data center delivers customers with low-latency connectivity throughout the Asia-Pacific region. This data center is a state-of-the-art carrier neutral facility with redundant fiber connections to numerous major bandwidth providers and ISPs. New Zealand's power requirements are almost entirely served by hydroelectric power stations and geothermal energy, allowing our data center to operate with a much lower carbon footprint.

AMSTERDAM, NL

Amsterdam data center is an 8,000 square foot Tier-3 facility in the hub of Europe. Strict European data privacy regulations and a diverse set of network routes make our Amsterdam data center the perfect choice for reaching clients in Europe, the UK, and beyond. This facility is ISO/IEC 27001 certified, ensuring that any sensitive data stored in the facility is held to the strictest security protocols.



LONDON, UK

This data center delivers the perfect balance of capacity and redundancy with connectivity to reach customers within Europe, Africa, and the Middle East. Our London data center is a tier 4 facility, delivering the most redundant infrastructure across all system components including power, networking, and cooling. Featuring up to 20Gbps connections on Tier 1 network carriers such as Level3, Zayo, and Sprint, this data center has the network capacity to power even the most demanding projects.

MONTREAL, QC

Established to cater to the demanding requirements of large IT businesses, ServerMania's Montreal data center is a 175,000 sq. ft. facility located in the heart of Montreal, Canada. With 50 Megawatts of available power on a 384,000 sq. ft. property, it is Canada's largest wholesale data center.



OUR NETWORK

NEW YORK CITY METRO

ServerMania's New York City Metro data center is the perfect choice for applications that demand the ultimate in low-latency connectivity and redundancy. Our New York City data center is a tier 4 facility, delivering the most redundant infrastructure across all system components. Featuring up to 10Gbps connections on Tier 1 network carriers, this facility is ideal for ForEx and other latency-sensitive applications with direct connectivity to New York City, North America, and beyond.

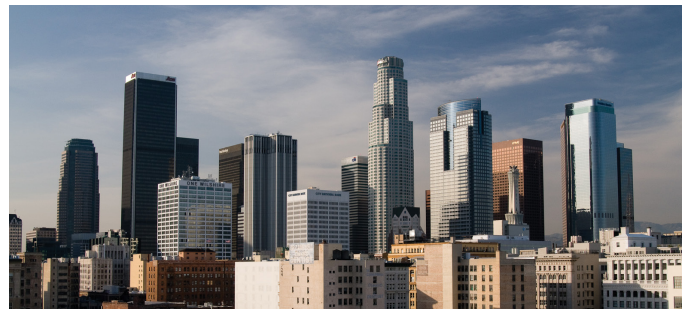


LOS ANGELES, CA

The ServerMania's Los Angeles network provides the lowest possible latency to Asia and Australia making our LA1 data center a smart choice for customers who wish to reach those regions. Fully redundant native 10GE network consists of nLayer, PCCW, Inteliquent and a variety of local peering.

BUFFALO, NY

Low latency and high throughput network access to North America and Europe. Fully redundant native 10GE network consists of Telia, GTT & XO onsite. We recently completed a connection between Buffalo, NY, and the Toronto Internet Exchange Community (TorIX), a key North American Internet Exchange Point (IXP), to ultimately provide our customers network latency below 10ms.



DALLAS, TX

This Dallas data center offers great low-latency connectivity throughout the US, but, unlike many US locations, it also has excellent connectivity to Central and South America. A diverse-path fiber ring provides reliable and redundant connections to the backbone network, which is especially tuned to serve Central and South America. Network carriers include Cogent & Fiberoire.



CORE PRODUCTS

PRODUCTS AND SERVICES

Engineered for redundancy, performance, and scalability.



PRIVATE & PUBLIC CLOUD

Our high-availability, public, and private cloud platforms are powered by Openstack and hosted in our cutting-edge Buffalo data center, which offers a fully redundant 300 Gbps network with connections to multiple Tier 1 network providers.



IP TRANSIT

Providing internet access and IP transit services at each of our service facilities in North America. These locations include Buffalo, New York and Montreal, Quebec. Our connections were designed from the ground up with superior performance, quality, and reliability in mind.



DEDICATED SERVERS

As an IAAS provider, we offer fully customizable hardware configuration options to provide an innovative solution for any hosted application. Our servers are outfitted with Enterprise-grade hardware, and performance tuned to exceed architectural standards in order to transcend benchmarks.



COLOCATION

Established to cater to the demanding requirements of large IT businesses, ServerMania's offers colocation services in many of our data centers throughout the world. Our next-generation data center designs represent the highest standards as defined by the Uptime Institute and allow businesses to grow without constraint.

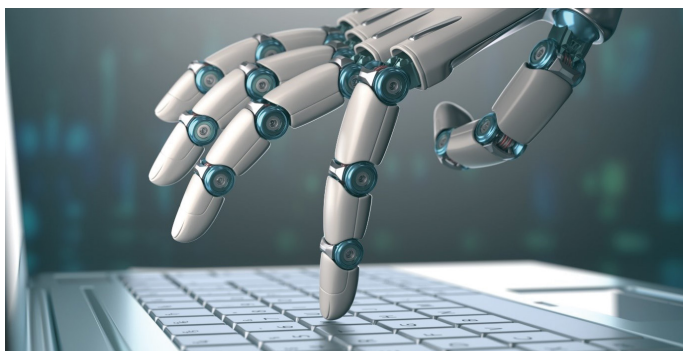
BENEFITS OF SERVERMANIA AS YOUR HOST

WHAT MAKES US THE RIGHT CHOICE FOR YOU?

Whether you are embarking on a new project, or you want to migrate to a new provider, the options can seem endless. At ServerMania, we believe in “Hosting Empowered”. Since 2002, we have been dedicated to serving the needs of our clients.

We believe that by listening to the needs and wants of our clients, we can better improve our product offerings and our overall customer experience.

Here are a few reasons why we believe ServerMania will be the right fit for you:



FEATURE-PACKED SURGE CONTROL PANEL

With our Surge control panel, managing your server installations has never been easier. Our clients are all equipped with an intuitive state-of-the-art platform designed to facilitate easy management of all your hosting services. Whether you're on a desktop or a mobile device, you can effortlessly analyze, manage, deploy, and resell every server in your plan.



OUR UNBEATABLE PRICES

It's always been our belief that you shouldn't have to pay an arm and a leg for enterprise-grade hosting. That's why our prices are among the best in the industry. We've put literally hundreds of hours of work towards honing our price points, ensuring our clientele receives the best value possible for their investment. Even better, you don't need to sacrifice any features - you'll get the same level of quality you would from a more expensive competitor.

TRUSTED BY



BENEFITS OF SERVERMANIA AS YOUR HOST



DYNAMIC HOSTING SOLUTIONS

No matter what you need a server for, we can help. Our infrastructure is easily tailored to meet any application requirement, no matter how intensive, and our dynamic hosting product is easily compatible with any specialty applications you might be looking to run. Not only that, all ServerMania packages are easily scaled - you never need to worry about running out of resources.



OUR SUPERIOR SUPPORT TEAM

Since we're so focused on customer satisfaction, it stands to reason that we'd have an awesome team of professionals to offer technical support to our clients. Our industry-leading staff is highly trained, and available 24x7x365 to answer any technical questions you might have - and to ensure you receive the highest quality of service possible. Our support fleet has one of the fastest response times in the industry - fifteen minutes or less, guaranteed.



OUR INDUSTRY-LEADING SLA

Built on our highly-redundant, custom-made networking hardware, our servers are some of the stables you'll ever find. That's why we're able to offer a 100% uptime service level agreement, which entitles clients to significant compensation in the (unlikely) event that an outage does occur. For us, to offer anything less simply isn't acceptable.



OUR DEDICATION TO THE CLIENT

We're all about keeping our clients happy - to that end, we give our clients as much freedom as we possibly can, while also providing them with plenty of room for growth. In addition, we conduct regular surveys to ensure our valued customers are totally satisfied with the level of service they are receiving. We take every comment, complaint, and concern seriously - as does our top-notch support team.



A leader in web hosting solutions since 2002.

www.servermania.com

 <https://www.facebook.com/servermaniainc>

 <https://twitter.com/servermaniainc>

 <https://www.youtube.com/servermaniainc>